



THREAT IDENTIFICATION

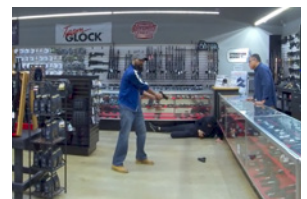
For FATS® 180 & 300LE Systems

Law enforcement officers may encounter any number of unpredictable, potentially explosive situations both on and off the job.

InVeris Training Solutions has designed this set of video courseware to prepare officers to correctly assess and address potential threats in dangerous encounters.

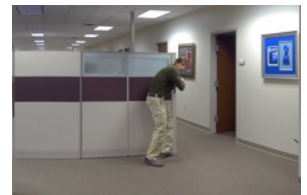
BUSINESS ARMED ROBBERY

Trainee responds to an attempted armed robbery in progress at a gun range. An armed civilian has already shot the robber and is holding them at gunpoint.



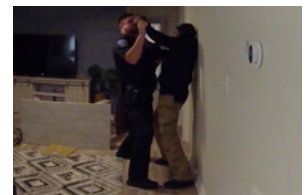
ACTIVE SHOOTER

Trainee responds to an active shooting in progress at an office building and encounters an off-duty officer. Trainee may accidentally shoot the officer or choose to proceed together. Trainee progresses through the building to encounter two shooters.



SUSPICIOUS PERSON CALL

Trainee responds to a report of a suspicious person entering a house with a crowbar. Scenario includes 2 options: to encounter either an armed homeowner, or an armed robber.



MISSING DRIVER

A fellow officer has requested assistance at a night time traffic stop; the driver has fled into the woods. Trainee arrives at the scene, clears both cars, and proceeds into the woods. Scenario includes 2 options: to encounter the driver who runs away and shoots, or to encounter the other officer and identify them correctly.



ROBBERY WITH HOSTAGE

The trainee is dispatched to a robbery in progress at a business. Upon arrival, the robber takes a store worker hostage at gunpoint.



NEIGHBOR ASSAULT DOMESTIC

Trainee responds to a fight in progress between neighbors. When officers arrive, they observe a male subject attacking another male with a baseball bat. Two bystanders are yelling for the man to stop. If trainee delays response, attacker will kill the victim and may attack the trainee or the bystanders.



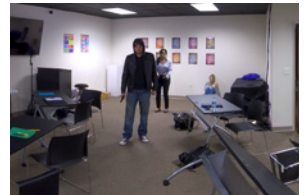
BURGLAR ALARM

Trainee responds to a burglar alarm at an office building at night. An armed person is outside when they arrive, but it is the business owner. A robber comes out of the building and shoots.



SCHOOL HOSTAGES

Trainee responds to a school, where a student has stabbed another student with a knife and is holding his class hostage including the teacher. Trainee must enter the school and talk down the student before he hurts anyone else.



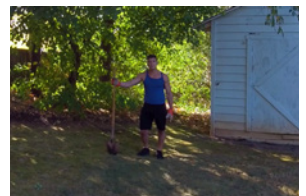
PROTEST

Trainee responds to a group of workers outside a business who are angry, vandalizing property, and acting aggressive. Officers must gain control and disperse the crowd. Includes options for two protestors to attack.



WARRANT ISSUE

Trainee is serving an arrest warrant, and approaches a man who is doing yardwork with a shovel. Options include subject compliance, fleeing, threatening, or attacking with shovel.



ITS-LEVirtualSales@inveristraining.com | 1.800.813.9046
296 Brogdon Road | Suwanee, GA 30024 USA

inveristraining.com

